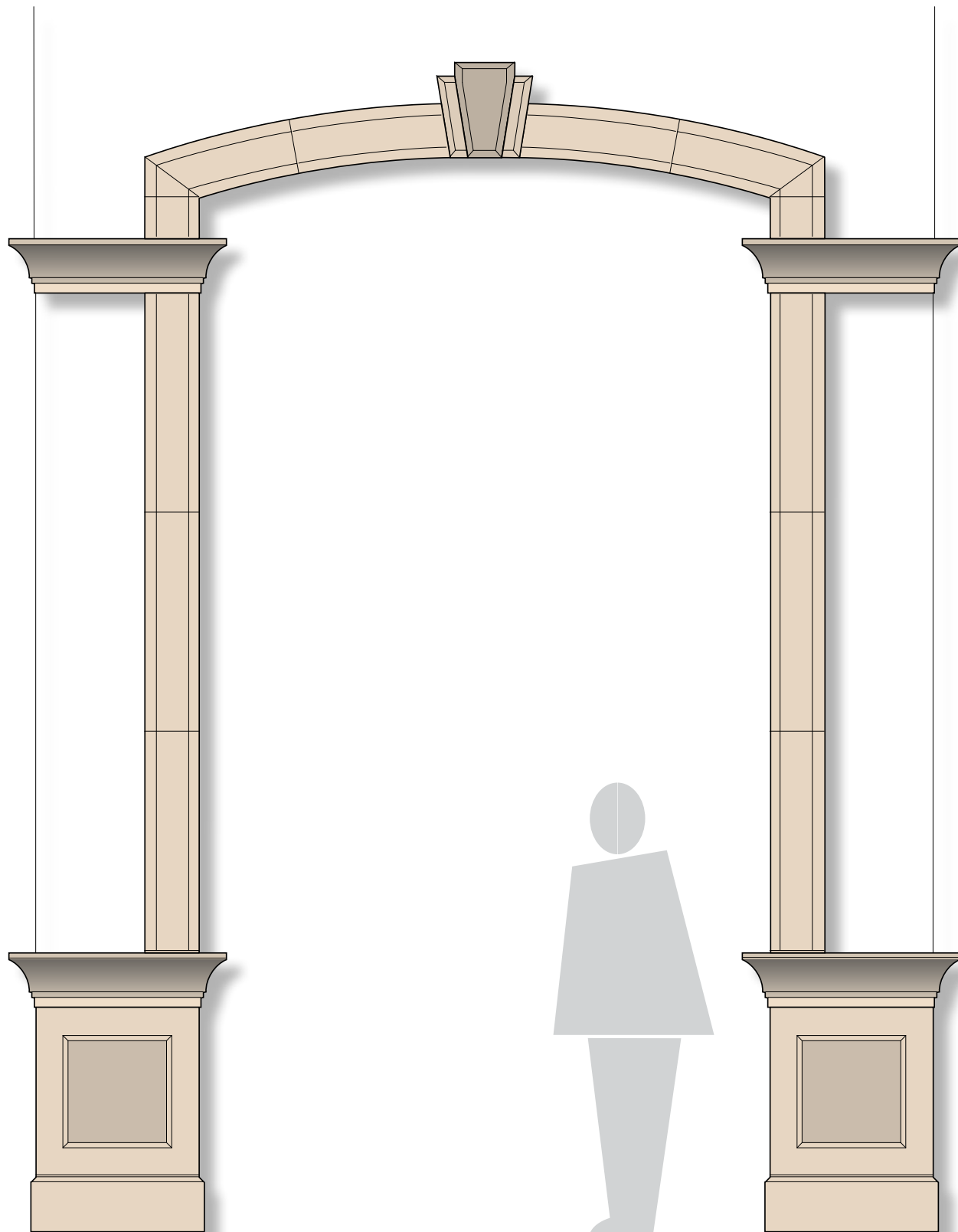




ENTRY SYSTEMS

ENTRY SYSTEMS

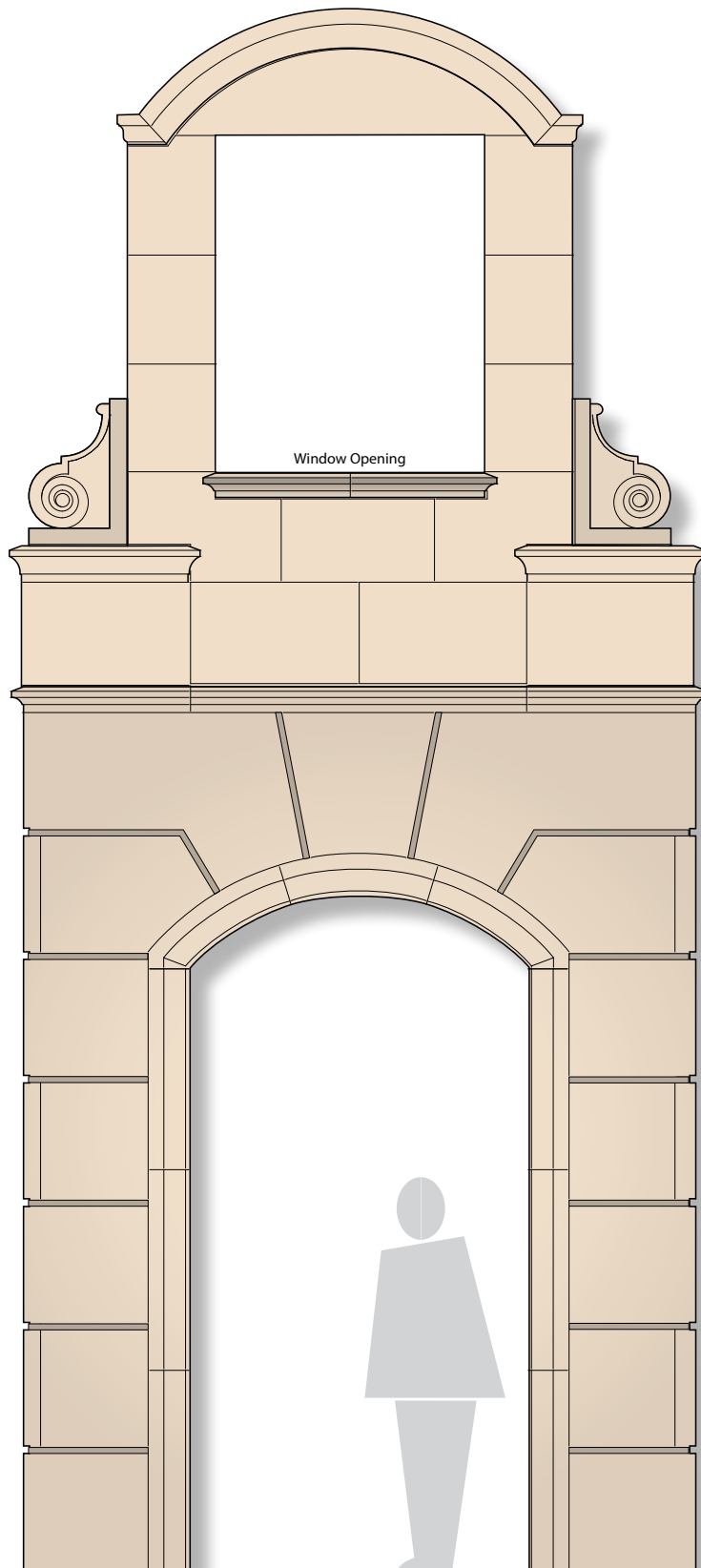
THE ABBOTT



Custom sizes and styles are available. Please ask for details.

ENTRY SYSTEMS

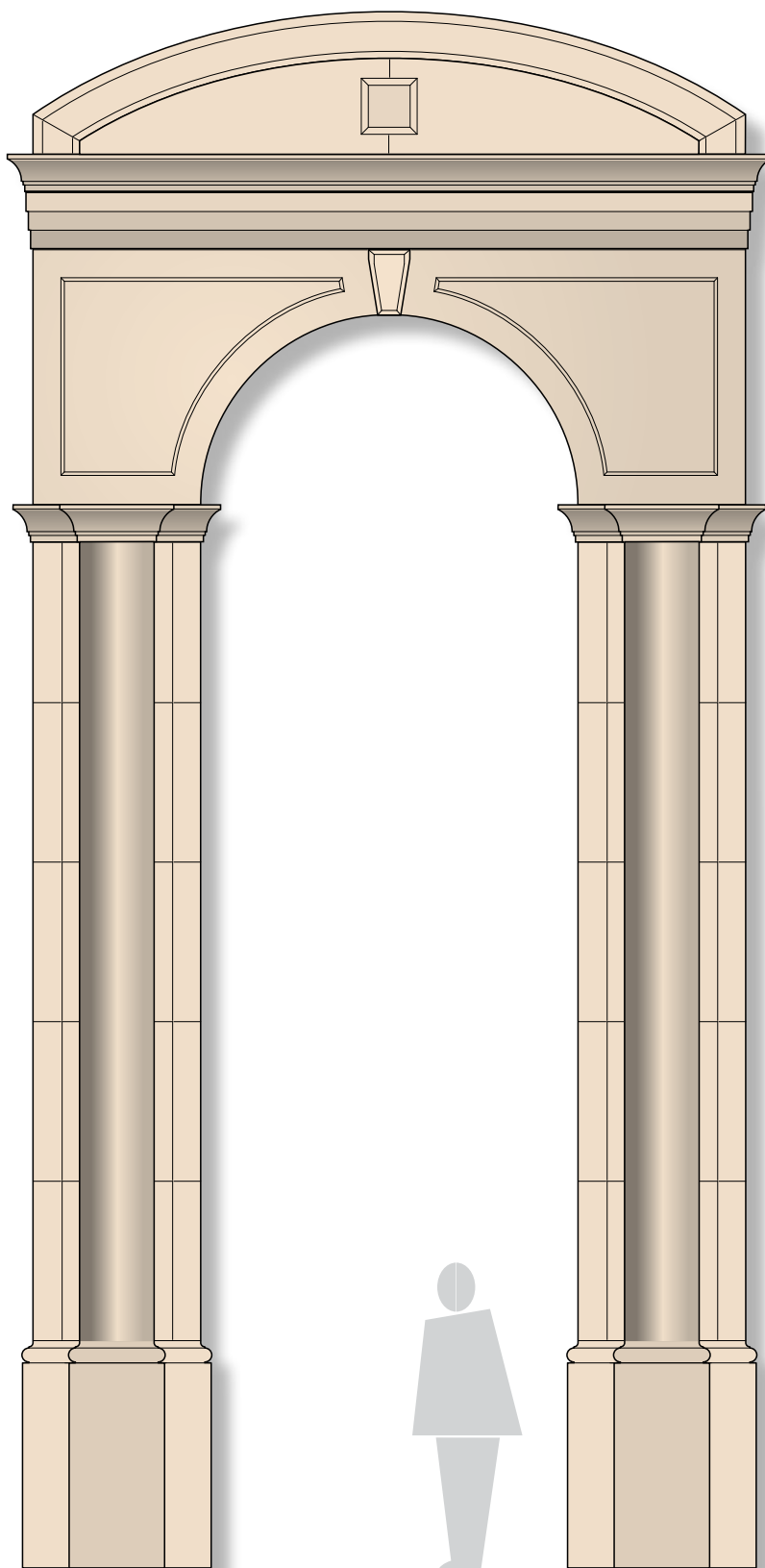
THE ASBURY



Custom sizes and styles are available. Please ask for details.

ENTRY SYSTEMS

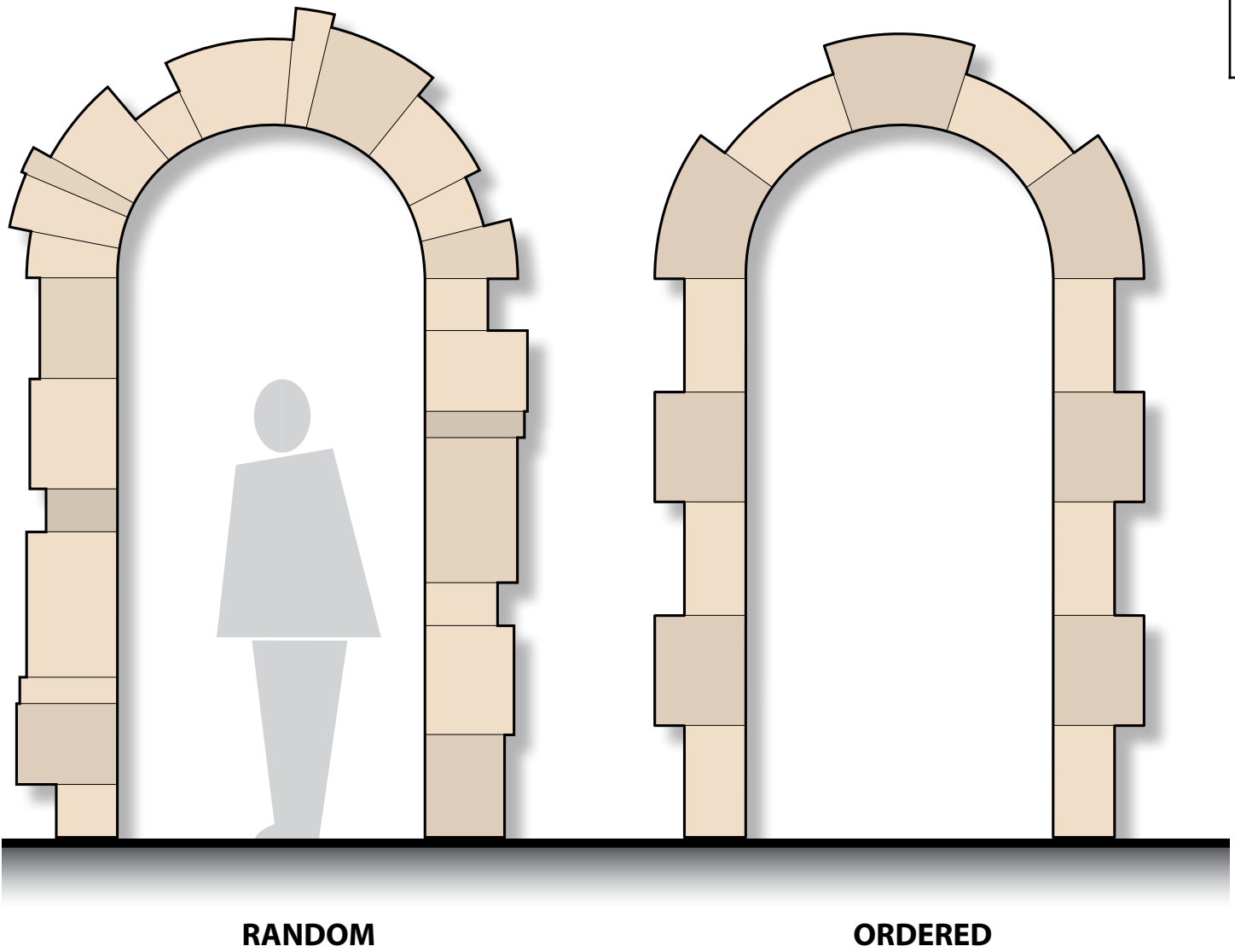
THE BELFORD



Custom sizes and styles are available. Please ask for details.

ENTRY SYSTEMS

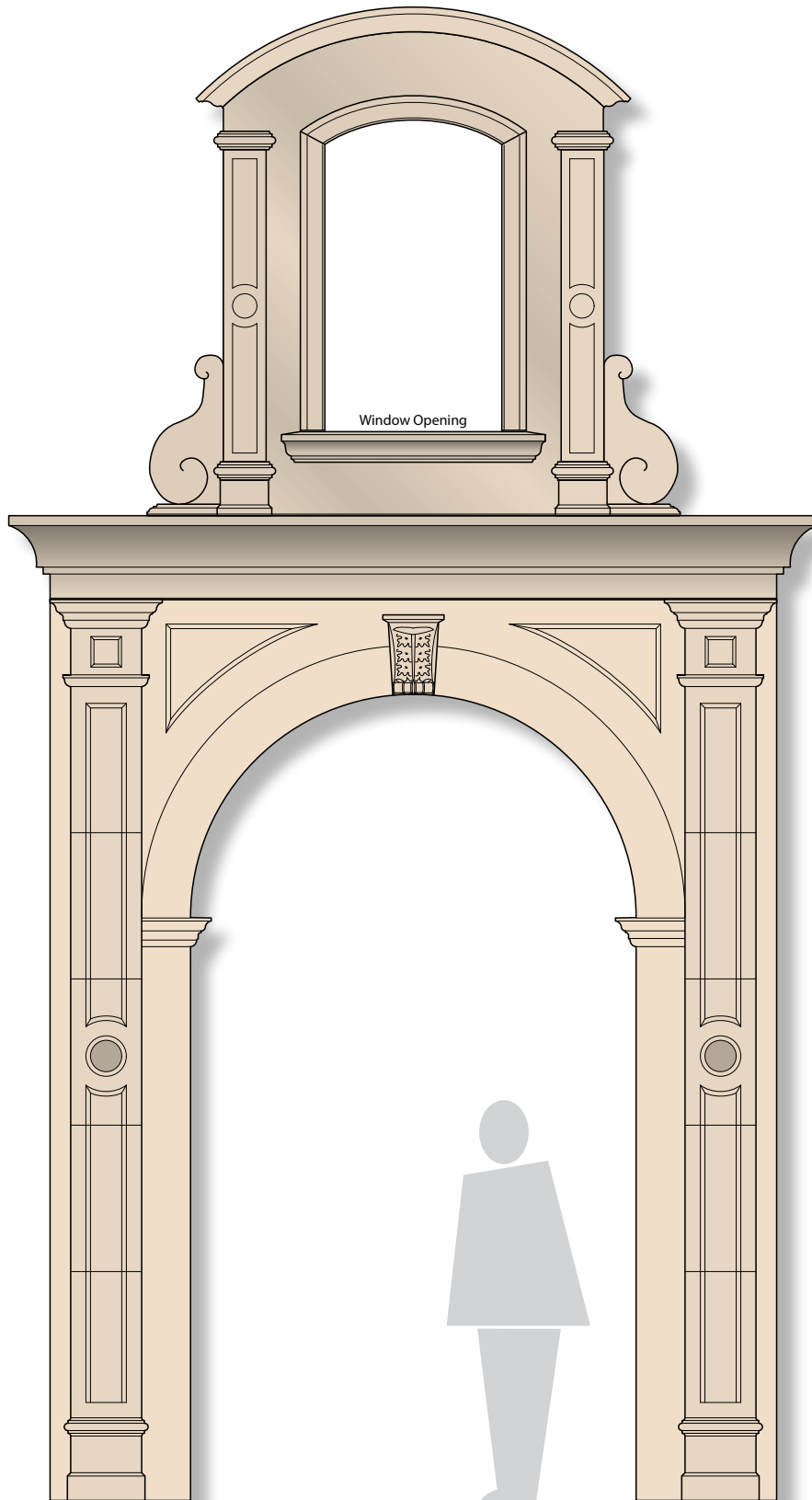
THE BERMER



Custom sizes and styles are available. Please ask for details.

ENTRY SYSTEMS

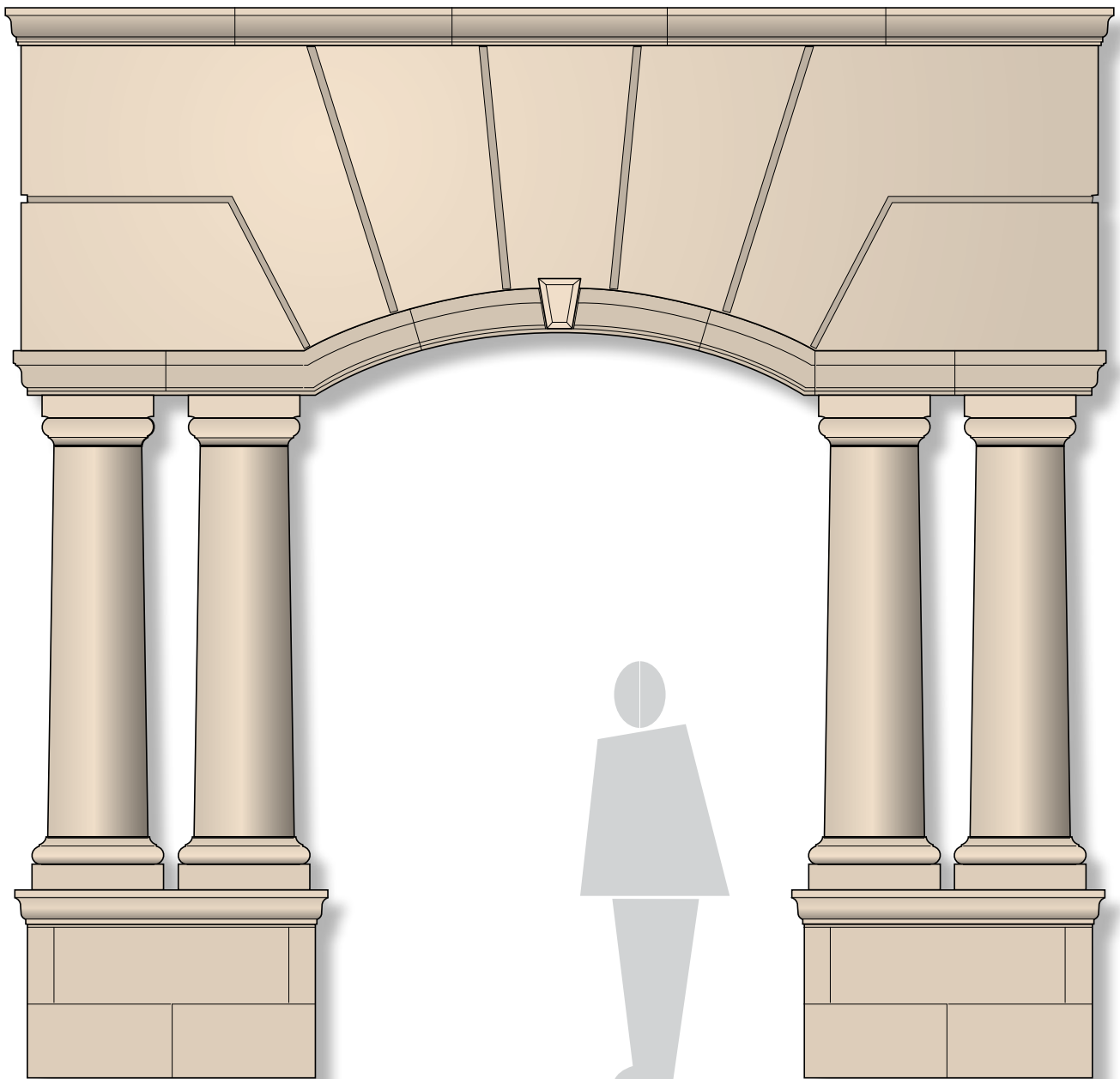
THE BRITISH COLONIAL



Custom sizes and styles are available. Please ask for details.

ENTRY SYSTEMS

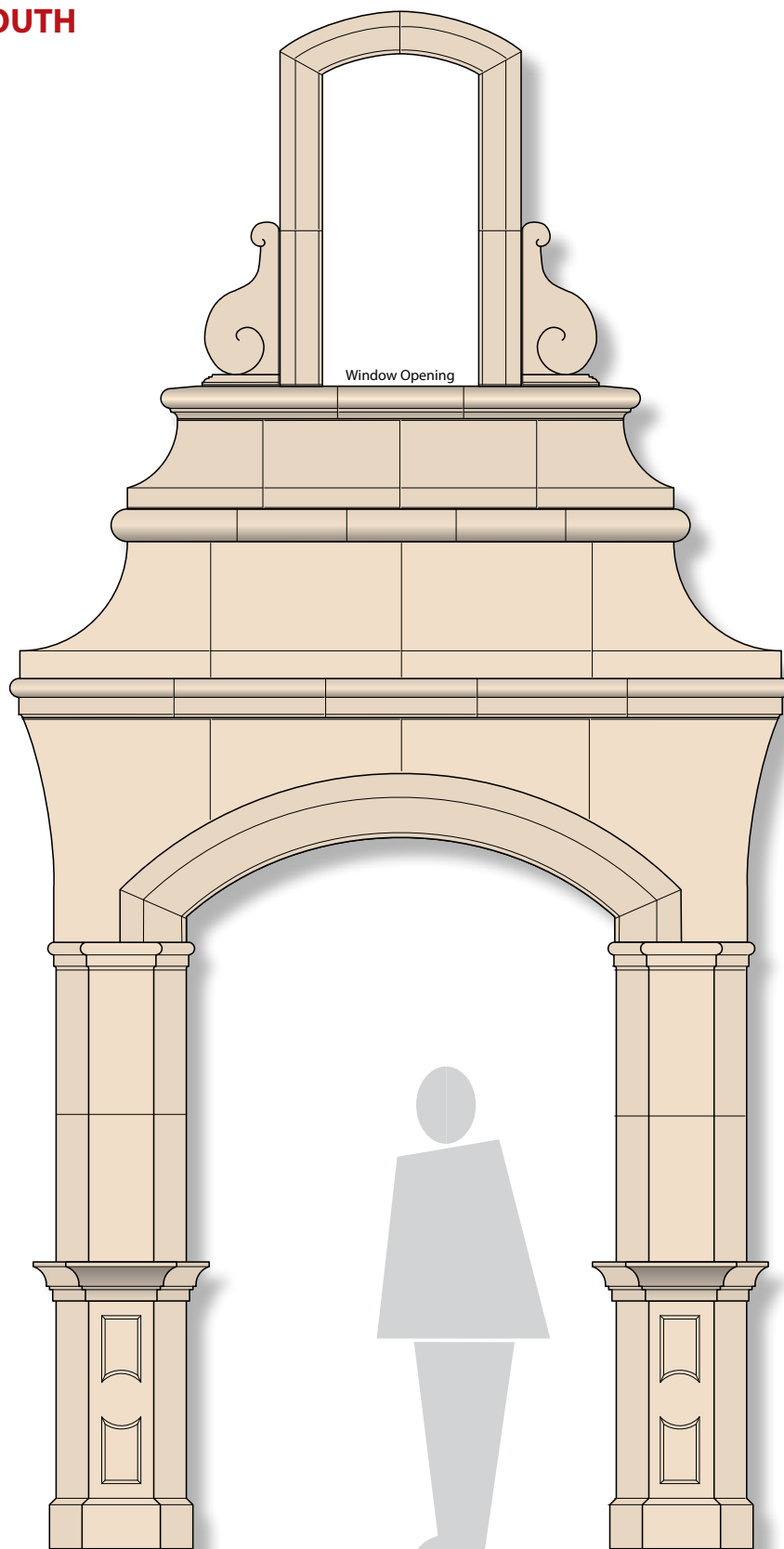
THE CORDOVA



Custom sizes and styles are available. Please ask for details.

ENTRY SYSTEMS

THE DARMOUTH

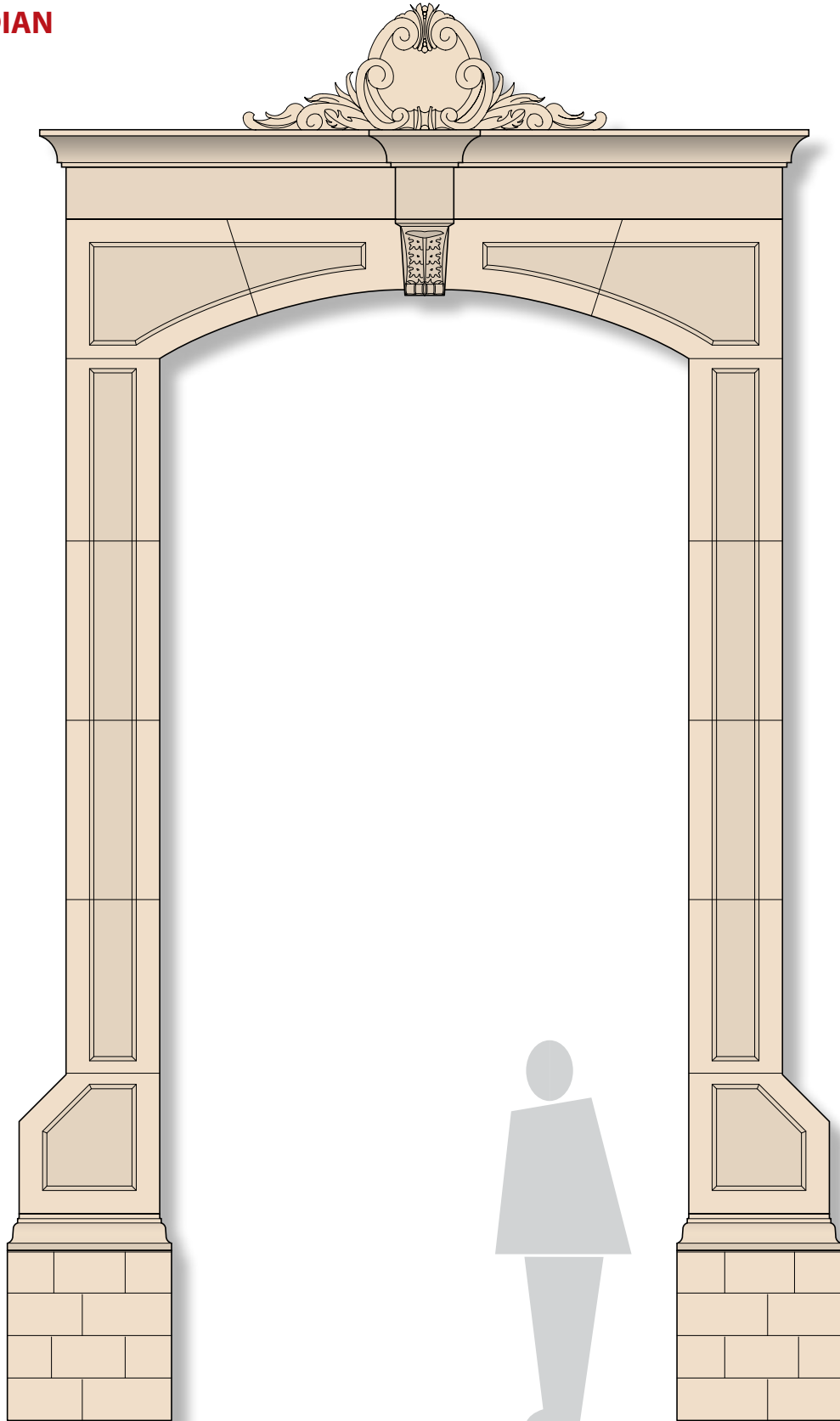


Window Opening

Custom sizes and styles are available. Please ask for details.

ENTRY SYSTEMS

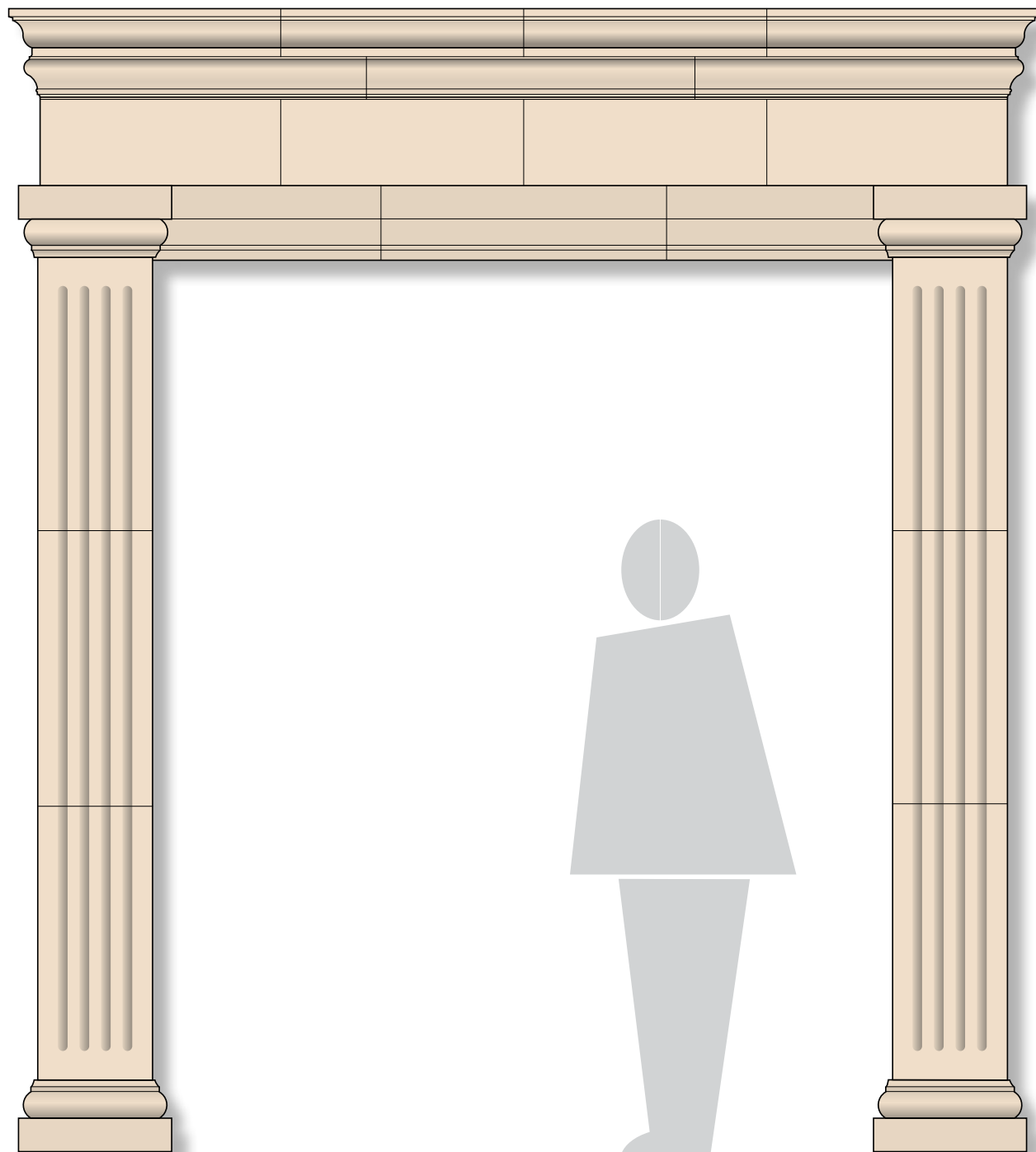
THE EDWARDIAN



Custom sizes and styles are available. Please ask for details.

ENTRY SYSTEMS

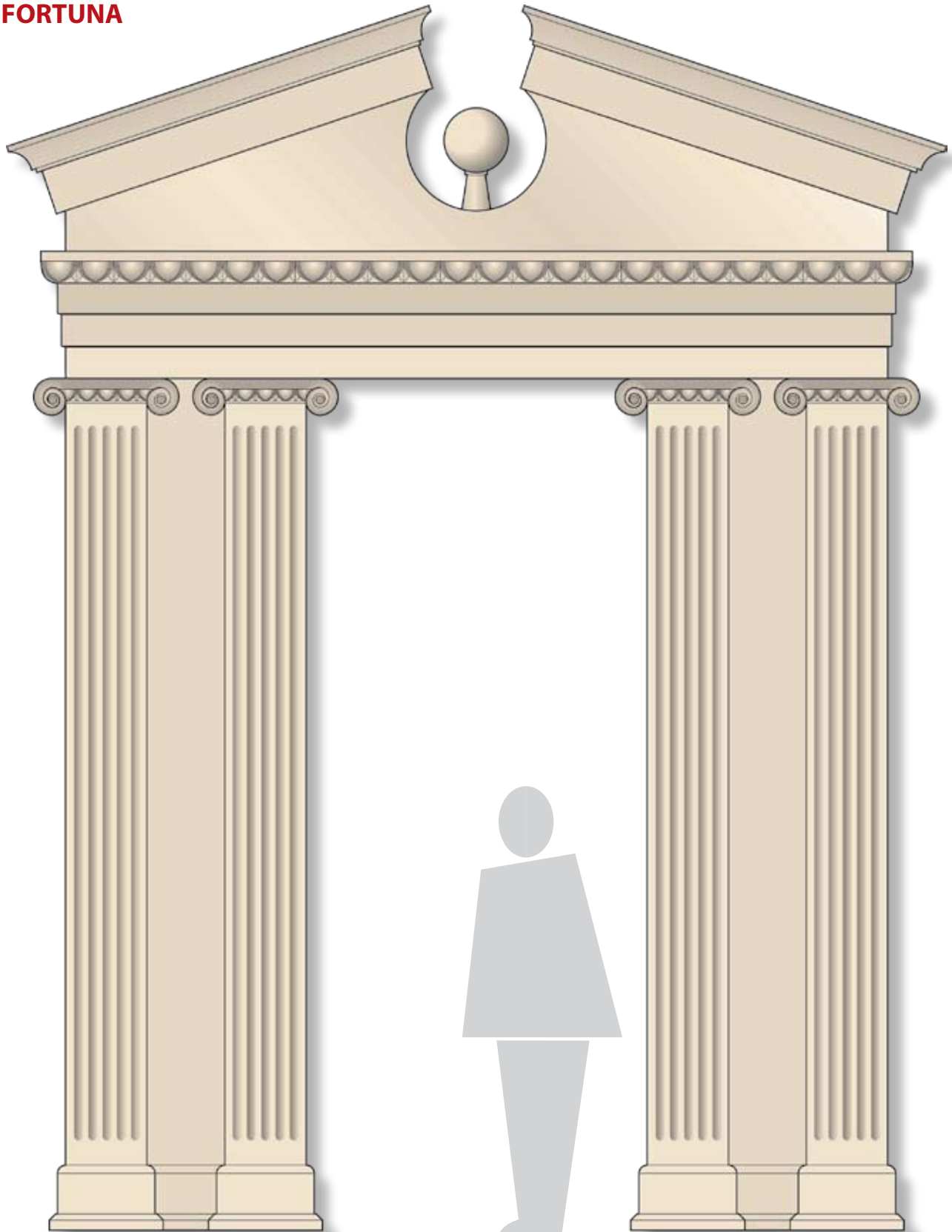
THE FEDERAL



Custom sizes and styles are available. Please ask for details.

ENTRY SYSTEMS

THE FORTUNA



Custom sizes and styles are available. Please ask for details.

ENTRY SYSTEMS

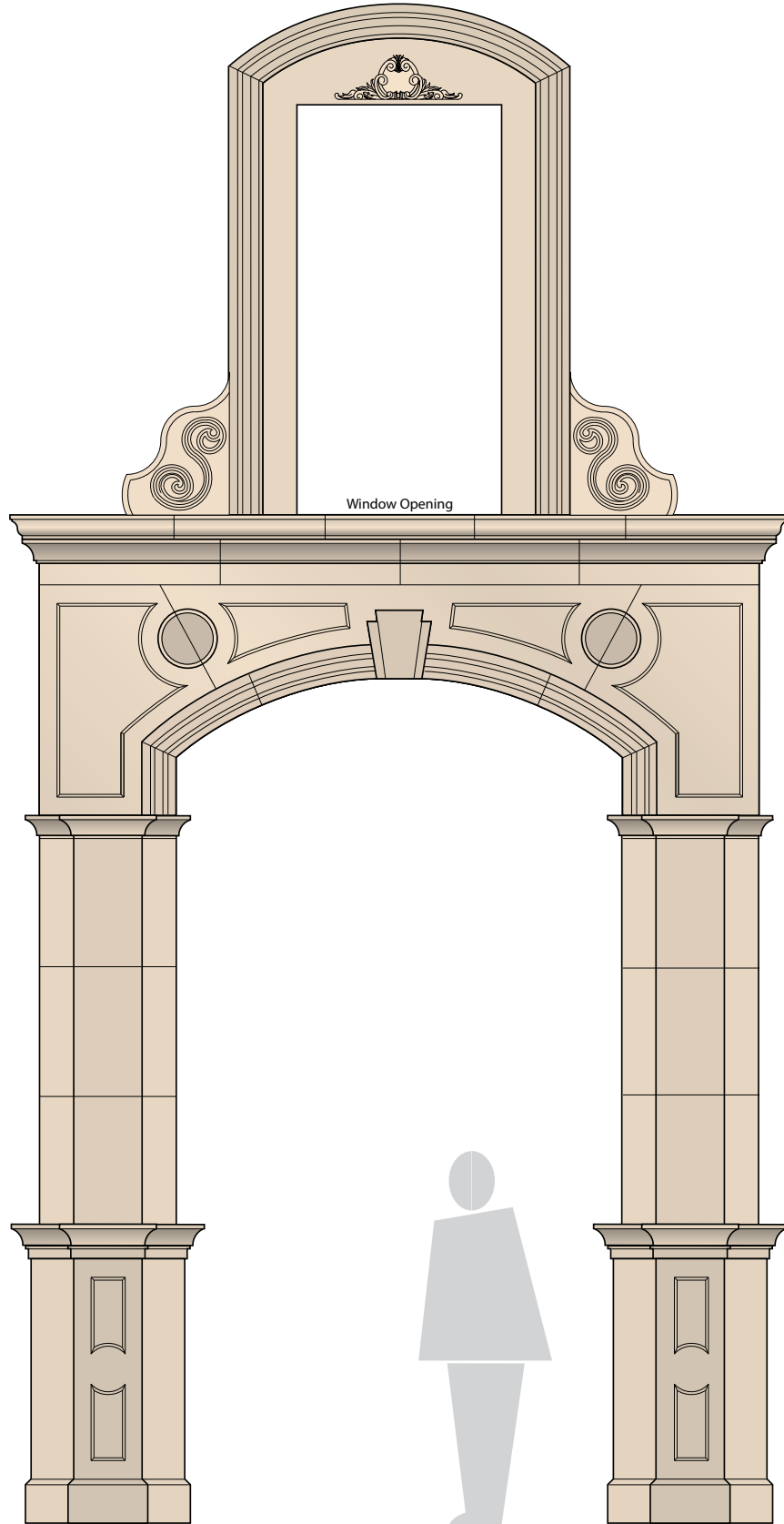
THE GRANADA



Custom sizes and styles are available. Please ask for details.

ENTRY SYSTEMS

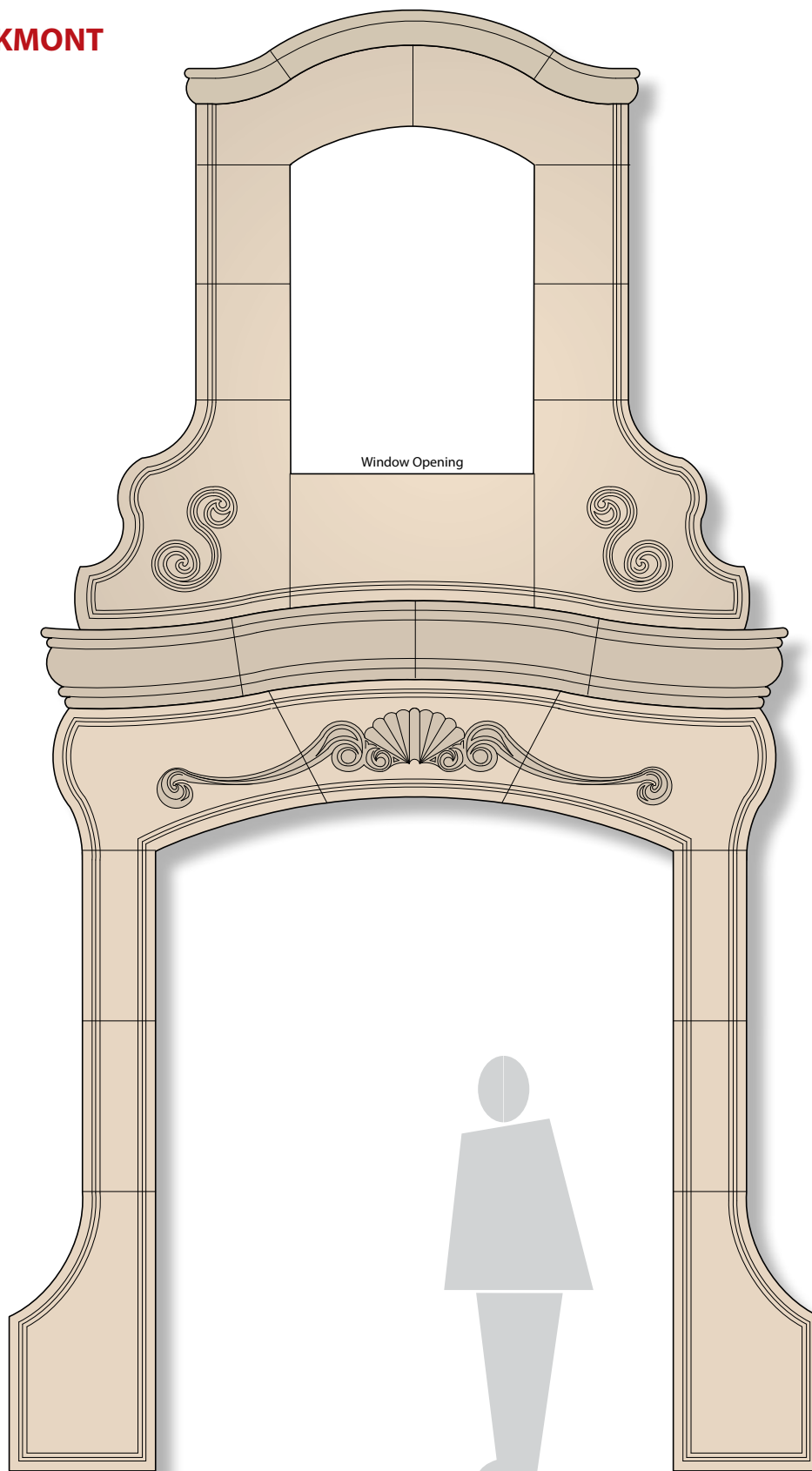
THE HARRAGATE



Custom sizes and styles are available. Please ask for details.

ENTRY SYSTEMS

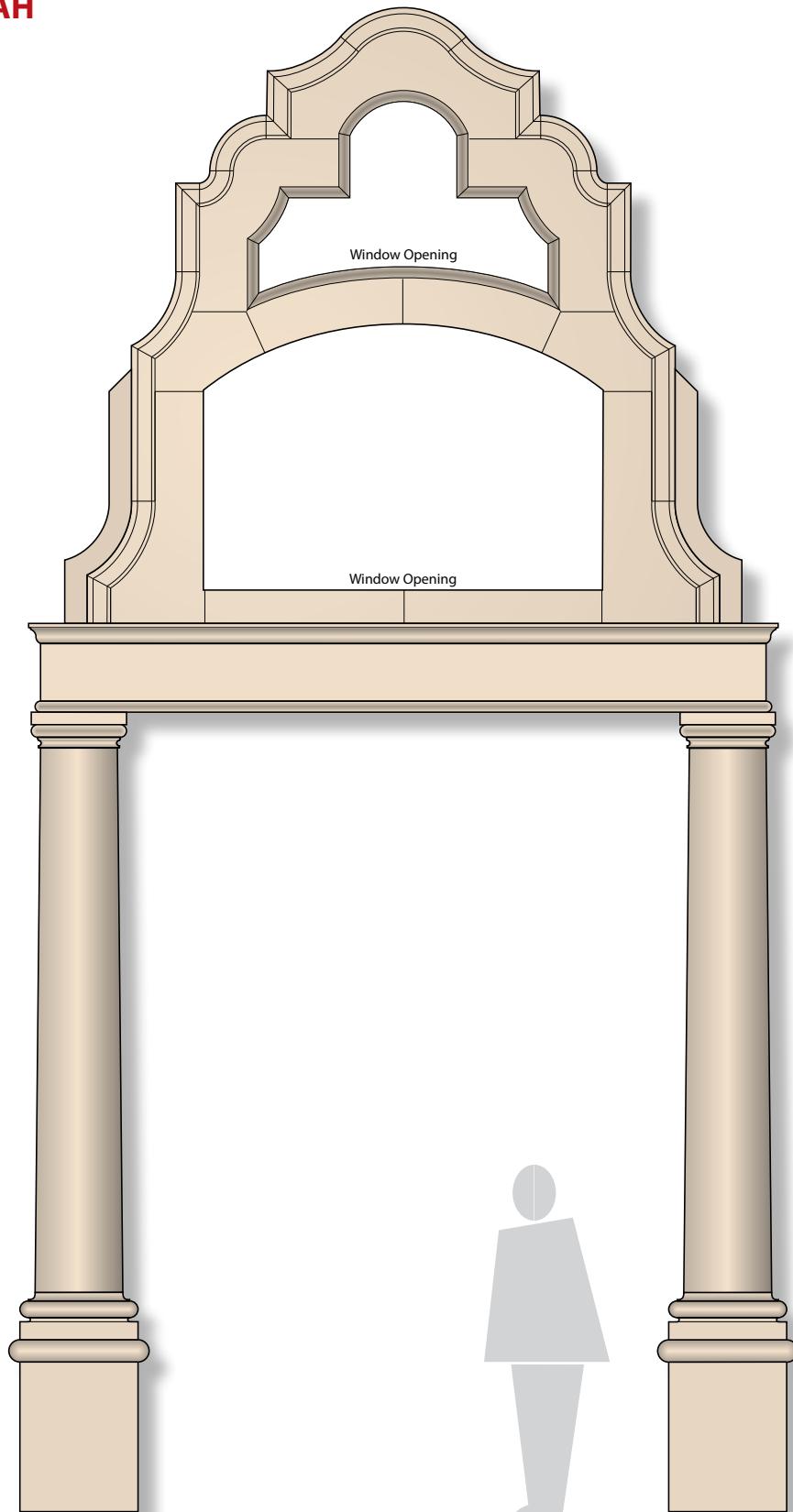
THE PARKMONT



Custom sizes and styles are available. Please ask for details.

ENTRY SYSTEMS

THE SHENANDOAH



Custom sizes and styles are available. Please ask for details.

ARCHITECTURAL *Cast Stone*

Placing an Order

Our pledge “Experience the Solution” exemplifies what we are capable of doing to make the process as simple as possible for you. Just send us what you have.

If you have a set of construction documents (set of plans), then that will do. If not, send us what you have. Perhaps you are involved in the restoration of an historical building that is older than paper, send us your sketches, photographs or hand drawings. We’ll work from there.

Generally that’s all we need to provide you with a preliminary consultation and estimate. If we have questions, we’ll contact you. Remember: Accurate dimensions are the key for accurate estimates.

How to send us your documents

Email is faster, economical and often easier. Send us CAD files, sketches and photos in almost any format. We’ll reply with a confirmation and a few questions to clarify the scope of the project, shortly after, you’ll receive our proposal. NASC submits detailed, itemized proposals. The proposal will allow you to have a clear idea of what’s included in the project. In many cases, we provide alternative proposals as recommendations or as suitable replacements.

For additional information regarding our entire line of products, services, and highly skilled installers, please contact us at **972-562-9992** or email us at info@northamericanstone.com You may also visit us on the internet at www.northamericanstone.com

Please email plans for estimating to plans@northamericanstone.com
In most cases, our estimating department can perform your estimate within 48 hours, whether you are hard bidding or simply establishing a budget.

Experience the Solution!

www.northamericanstone.com



NORTH AMERICAN
STONE COMPANY

P.O. Box 2300
McKinney, TX 75070-8168
972.562.9992 Office
972.562.0794 Fax
info@northamericanstone.com

www.northamericanstone.com