

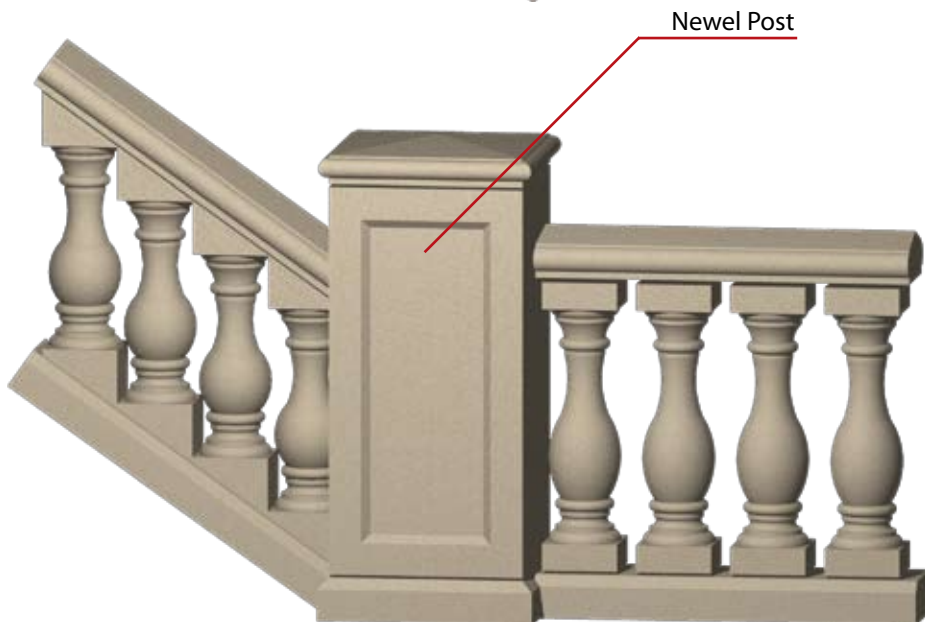
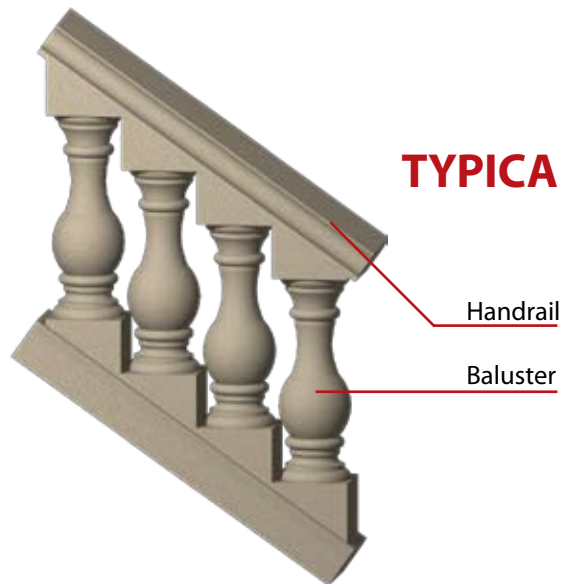
BALUSTRADE SYSTEMS

BALUSTRADE SYSTEMS

BASIC BALUSTRADE COMPONENTS



TYPICAL BALUSTRADE ASSEMBLY



Ask our representative about our newel posts and other specialty balustrade items.

Custom sizes and styles are available.

Please ask for details.

BALUSTRADE SYSTEMS

BALUSTERS



STYLE BL1

Item #	Size
BL1-23	23"
BL1-27	27"
BL1-33	33"



STYLE BL5

Item #	Size
BL5-23	23"
BL5-27	27"
BL5-33	33"



STYLE BL2

Item #	Size
BL2-23	23"
BL2-27	27"
BL2-33	33"



STYLE BL6

Item #	Size
BL6-23	23"
BL6-27	27"
BL6-33	33"



STYLE BL3

Item #	Size
BL3-23	23"
BL3-27	27"
BL3-33	33"



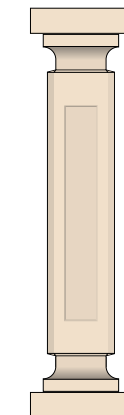
STYLE BL7

Item #	Size
BL7-23	23"
BL7-27	27"
BL7-33	33"



STYLE BL4

Item #	Size
BL4-23	23"
BL4-27	27"
BL4-33	33"



STYLE BL8

Item #	Size
BL8-23	23"
BL8-27	27"
BL8-33	33"

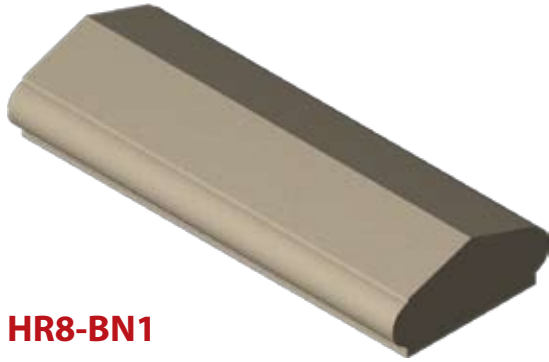
A 23" high baluster is used in the 32" high baluster system. The 27" is used in the 36" high baluster system and the 33" high baluster is used in the 42" high baluster system.

Custom sizes and styles are available.

Please ask for details.

BALUSTRADE SYSTEMS

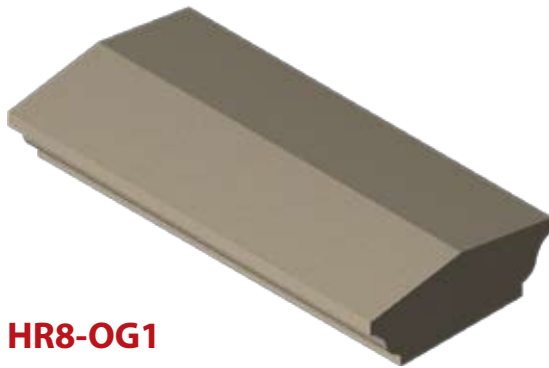
HANDRAILS



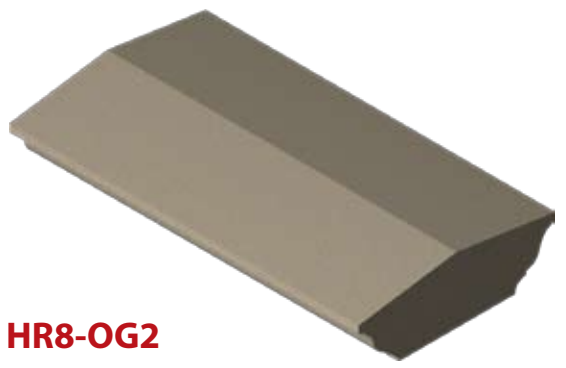
HR8-BN1



HR8-BN2



HR8-OG1



HR8-OG2

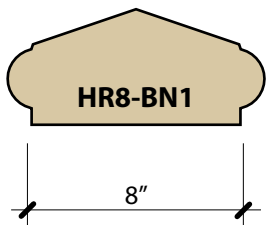


HR8-PR1



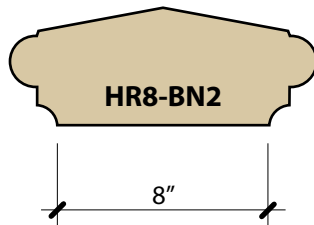
HR8-PR2

PROFILES



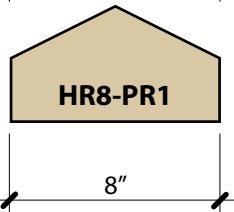
HR8-BN1

8"



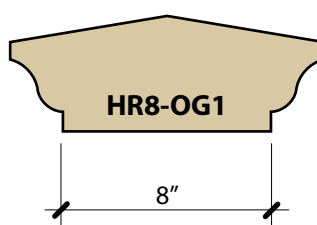
HR8-BN2

8"



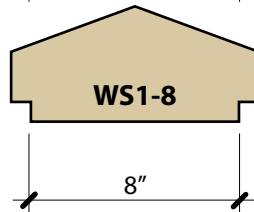
HR8-PR1

8"



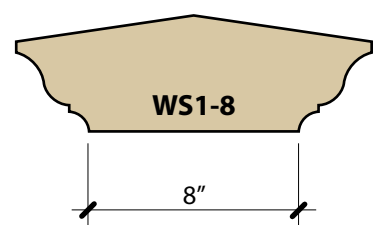
HR8-OG1

8"



WS1-8

8"



WS1-8

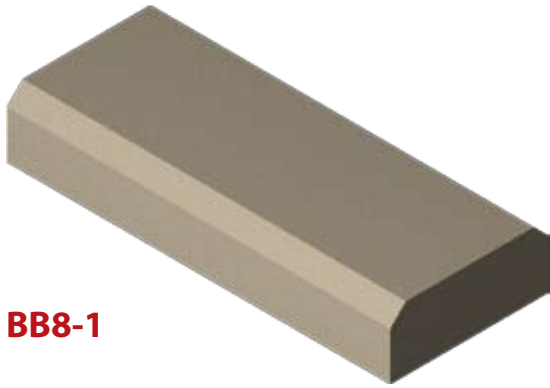
8"

Custom sizes and styles are available.

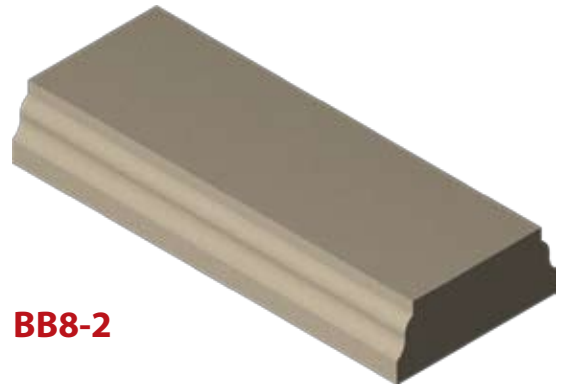
Please ask for details.

BALUSTRADE SYSTEMS

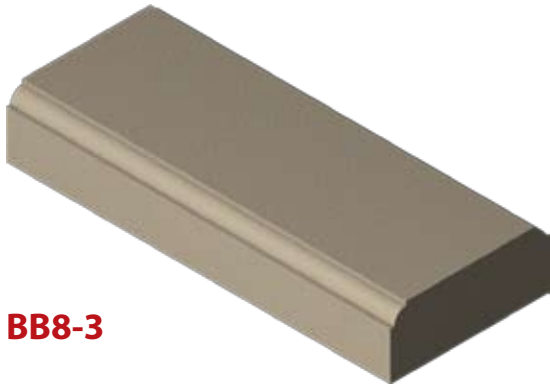
BASERAILS



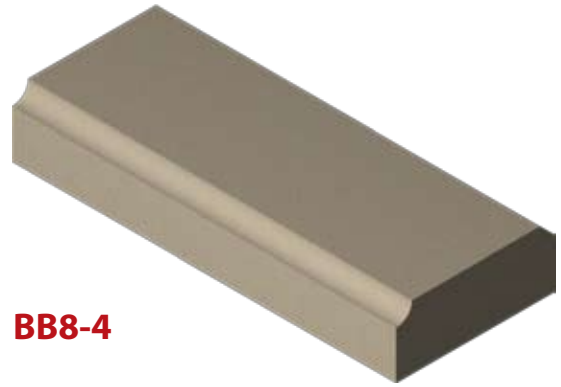
BB8-1



BB8-2

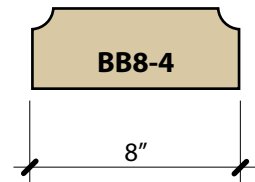
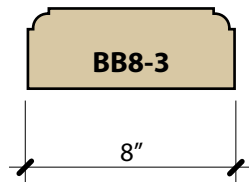
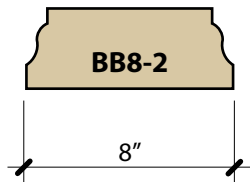
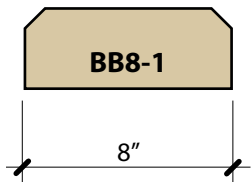


BB8-3



BB8-4

PROFILES



Custom sizes and styles are available. Please ask for details.

ARCHITECTURAL *Cast Stone*

Placing an Order

Our pledge “Experience the Solution” exemplifies what we are capable of doing to make the process as simple as possible for you. Just send us what you have.

If you have a set of construction documents (set of plans), then that will do. If not, send us what you have. Perhaps you are involved in the restoration of an historical building that is older than paper, send us your sketches, photographs or hand drawings. We’ll work from there.

Generally that’s all we need to provide you with a preliminary consultation and estimate. If we have questions, we’ll contact you. Remember: Accurate dimensions are the key for accurate estimates.

How to send us your documents

Email is faster, economical and often easier. Send us CAD files, sketches and photos in almost any format. We’ll reply with a confirmation and a few questions to clarify the scope of the project, shortly after, you’ll receive our proposal. NASC submits detailed, itemized proposals. The proposal will allow you to have a clear idea of what’s included in the project. In many cases, we provide alternative proposals as recommendations or as suitable replacements.

For additional information regarding our entire line of products, services, and highly skilled installers, please contact us at **972-562-9992** or email us at info@northamericanstone.com You may also visit us on the internet at www.northamericanstone.com

Please email plans for estimating to plans@northamericanstone.com
In most cases, our estimating department can perform your estimate within 48 hours, whether you are hard bidding or simply establishing a budget.

Experience the Solution!

www.northamericanstone.com



NORTH AMERICAN
STONE COMPANY

P.O. Box 2300
McKinney, TX 75070-8168
972.562.9992 Office
972.562.0794 Fax
info@northamericanstone.com

www.northamericanstone.com